

# Executive Summary

The objective of the Laramie County Community College (LCCC) Return to Business (R2B) plans is to establish a structure of protocols that will allow LCCC to return to a state where people can engage with each other as appropriate to effectively carry out the programs, services, and activities necessary for the attainment of LCCC's mission.

The overarching purpose of the R2B Plan is to define *the conditions* that are necessary to allow *College functions* to reopen in a *strategic way*.



## R2B Plan Phases

Phase I – June 1 – August 14	Phase II – Fall 2020 August 15 – December 31	Phase II – Spring 2021 January 1 – May 31	Phase III – June 1 and beyond – TBD
---------------------------------	---	--	--

## Phase II Spring 2021

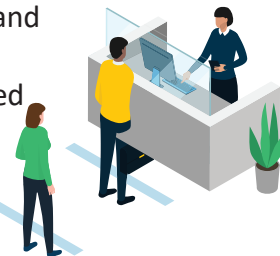
### LCCC College Operations:

- LCCC will continue physical operations to serve our students and community members.
- Areas may be open with limitations regarding the number of individuals they can serve and/or may require appointments.
- When possible, online conferencing (e.g., Zoom), email, or telephone should be used in place of in-person meetings.
- Campus hours of operation will be 8 a.m. - 5 p.m. (M-F).
- College sponsored travel will continue to be restricted for Spring 2021.



### Testing, Contact Tracing, Quarantine:

- Testing will be based upon state and federal guidance and availability.
- Contact tracing will be coordinated by the COVID Response Team and/or the Cheyenne-Laramie County Health Departments.
- Students living in the residence halls will be tested prior to moving into the halls.
- LCCC will provide resources and isolation space for those diagnosed with COVID-19, while living on campus.



### Health, Distancing and Screening:

- Do not come to campus if you are experiencing COVID-19 related symptoms.
- All LCCC employees, students and visitors will be required to wear a face covering on campus when social distancing is not possible.
- While on campus social distancing of at least six feet is strongly encouraged and may be required in certain areas.
- All employees and students must complete self-screening each day prior to coming to campus.
- All employees and students will participate in education and training regarding COVID-19.

### Academic Course Delivery:

- LCCC will continue to offer academic courses in the Spring 2021 primarily online, but also via face-to-face and hybrid modalities.
- The academic calendar for LCCC will remain as posted.

### Residence Halls:

- LCCC will have three residence halls open for the Spring 2021 semester, all operating at lower-density than normal.
- Students that are considered a household unit or are in an athletic or academic cohort with regular and close interactions may share a room and bathroom unit.
- All other students will be assigned to a single room.
- Visitors will be limited to shared open spaces.

## LCCC Athletics:

- Golden Eagle athletics will resume in the Spring 2021.
- A limited number of spectators will be allowed at athletic contests. Indoor events will be limited to 150 people (including participants, coaches, officials, and event workers).
- Spectators will be required to wear a face covering at all indoor athletic competitions and social distancing will be practiced in the stands between household units.
- Athletic teams and their coaches will follow Region IX Screening Protocol on competition days.
- Student athletes will participate in daily self-screenings and have their temperatures taken regularly.
- Specific protocols for each event—basketball, volleyball, and soccer—will be shared with visiting teams prior to their trip to LCCC.
- During athletic contests, no open usage of RAC facilities will occur.

## Events and Gatherings:

- Events on campus will be allowed under certain circumstances and with certain approvals, but rarely with numbers of people exceeding 50.
- Gatherings of groups larger than 50 MAY be permitted with appropriate approvals.

## Operations Plans:

Functional areas will be required to submit a Phase II Spring 2021 Operations Plan for their specific area, unless they currently have an approved Phase II Fall 2020 reopening plan that does not require significant changes for Spring. If their Phase II Fall 2020 reopening plan requires updates, a Phase II Spring 2021 Operations Plan must be submitted.

- Phase II Spring 2021 Operations Plans require functional areas to demonstrate how they will meet stakeholder needs, while adhering to all external guidance and LCCC criteria and how COVID-19 mitigation strategies will be maximized.
- It is highly recommended that functional areas conduct a risk assessment to support the development of their Phase II Spring 2021 Operations Plan, if not completed for their Phase II Fall 2020 plan.

## Communication:

- Official LCCC email will remain the College's main source of communication for all students and employees.
- R2B Plans and critical updates are available at [lccc.wy.edu/covid](https://lccc.wy.edu/covid).
- R2B forms, the complete R2B plan, and approved area-specific Operation plans are available to employees and students on the College's portal, myLCCC.

