

Executive Summary

The objective of the Laramie County Community College (LCCC) Return to Business (R2B) plan is to establish a structure of protocols that will allow LCCC to return to a state where people can engage with each other as appropriate to effectively carry out the programs, services, and activities necessary for the attainment of LCCC's mission. In response to the COVID-19 global pandemic, LCCC's Phase III Plan will at a minimum align with state and local guidance. There may be times when LCCC's guidance is more stringent than state and local guidance to maintain a safe environment for our students, employees and visitors.



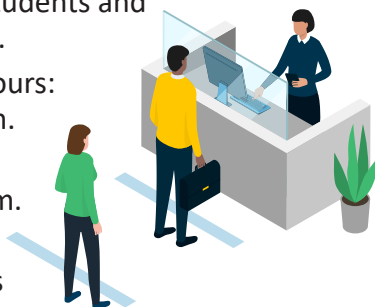
R2B Plan Phases

Phase I 6/1/2020 - 8/14/2020	Phase II 8/15/2020 - 12/31/2020	Phase II 1/1/2021 - 5/16/2021	Phase III 5/17/2021 - 6/30/2022
---------------------------------	------------------------------------	----------------------------------	------------------------------------

Phase III Continued Spring & Summer Semesters 2022

LCCC College Operations:

- Spring & Summer Semesters 2022: LCCC will be fully open for on-campus, in-person physical operations to serve students and community members.
 - Spring operating hours: M-F 8 a.m. to 5 p.m.
 - Summer operating hours: M-F 7:30 a.m. to 4 p.m.
- In-person, on-campus meetings may be scheduled in rooms that allow for social distancing; online conferencing (e.g., Zoom and Microsoft Teams), email, or telephone may be used to address limits to social distancing when necessary.
- Certain areas of campus may have alternate hours of operation, to meet the needs of stakeholders, which will be posted on the office door and department website.
- College-sponsored travel will continue to be restricted for Spring & Summer 2022 and must be approved by an area's Cabinet representative.
- Students, employees and visitors should not come to campus if you are experiencing COVID-19 related symptoms.
- Employees that are COVID positive are required to notify their immediate supervisor and Human Resources.



- For all LCCC employees, masks will be required when indoors on College property (including inside vehicles) when social distancing (6 feet) is not possible.
- All students and visitors that are not vaccinated for COVID-19, are recommended to use face coverings and practice social distancing. This guidance is subject to change based on the local conditions around the COVID-19 pandemic.
- Students that test positive for COVID-19 should notify the Dean of Students.
- All new employees and residence hall students will participate in education and training regarding COVID-19, unless training was completed in a previous R2B phase.

Testing, Contact Tracing, Quarantine:

- Testing will be based upon state and local guidance, availability and funding.
- Contact tracing will be coordinated by the LCCC task force and/or the Cheyenne-Laramie County Health Department.

COVID Vaccination Education:

- With the approval and distribution of several vaccines, it is important to provide easy access to credible vaccine information. There are several links to credible information provided in Appendix I.

Academic Course Delivery:

- LCCC will plan to deliver a standard number of on-campus, in-person classes for the Spring & Summer semesters. We will also continue to offer academic classes in both hybrid and online modalities.
- The [academic calendars](#) for LCCC will remain the same as posted.

Residence Halls:

- LCCC will have three residence halls open for the Spring & Summer 2022 semesters with normal density models.
- Depending on the availability of LCCC provided COVID tests, students living in the residence halls will be tested prior to moving into the halls, unless they provide proof of being fully vaccinated.
- Non-Students (i.e. vendors, camp participants, etc.) temporarily residing in the Halls will complete a waiver upon check-in.

LCCC Athletics:

- Golden Eagle Athletics will resume practices and competitions, in alignment with current health order guidance, and further determined by NJCAA, NIRA guidance, and Region IX coordination.

Events and Gatherings:

- Events and gatherings that meet state and local health guidelines and with approval of Facilities & Events Office will be considered.

Operations Plans:

- Functional areas Phase III Summer & Fall 2021 Operations Plans will be rolled forward unless changes are made by the functional area.

Communication:

- Official LCCC email will remain the College's main source of communication for all students and employees regarding updates to this R2B plan. Additionally, critical updates are available at lccc.wy.edu/covid.
- Town Hall meetings will be conducted throughout Phase III, with Dr. Schaffer providing updates on how COVID-19 continues to impact the campus and community.
- R2B forms, the complete R2B plan, and approved area-specific Operations Plans are available to employees and students on the College's portal, myLCCC.

