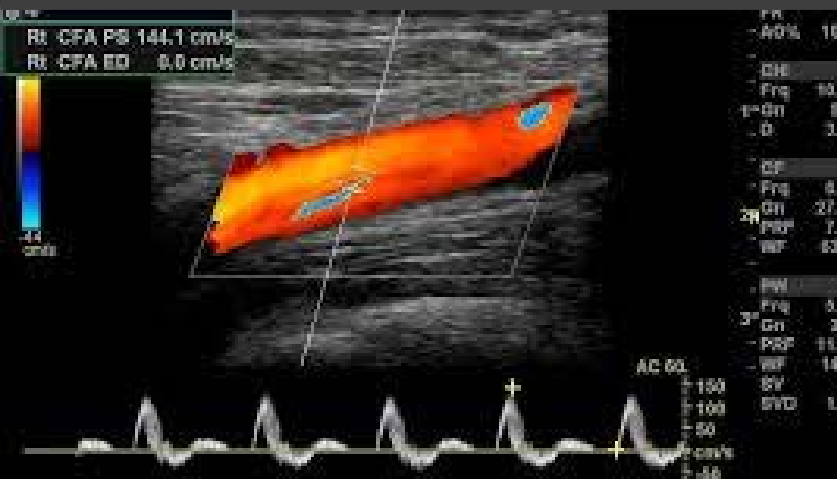
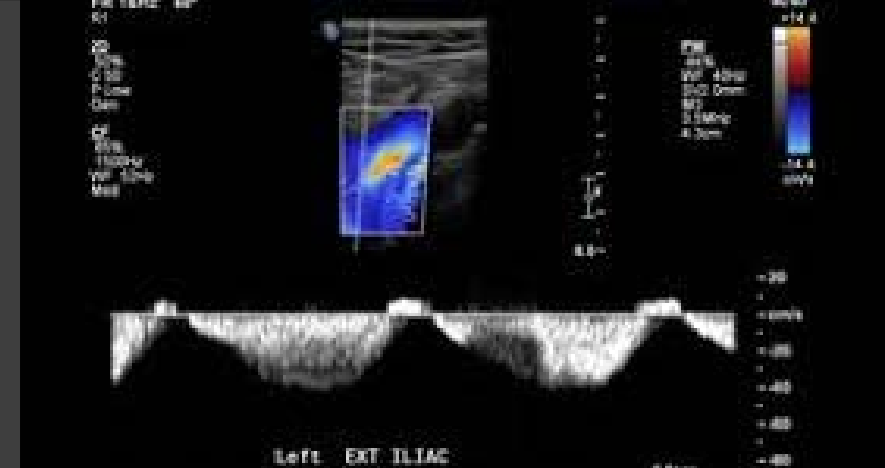


DIAGNOSTIC MEDICAL SONOGRAPHY PROGRAM REVIEW

ADRIENNE WADE MS, RDMS, RVT PROGRAM DIRECTOR/INSTRUCTOR
JORDYN TROOP MHSc, RDMS, RVT CLINICAL COODINATOR/INSTRUCTOR



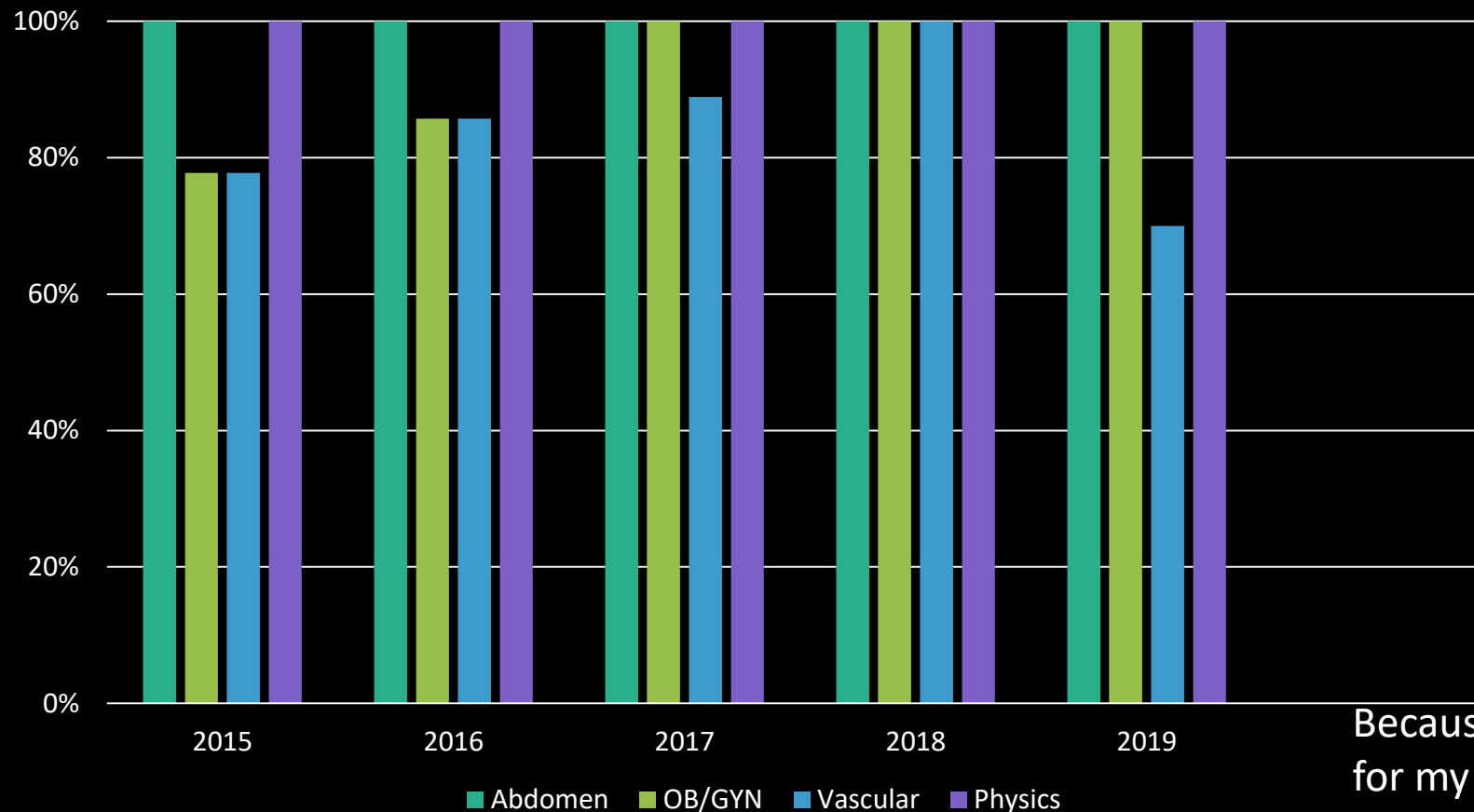


DEGREE: A.A.S.
CONCENTRATIONS: Abdomen,
Obstetrical/Gynecology, and
Vascular

National Certifications

100% Pass Rate

Student Statistics

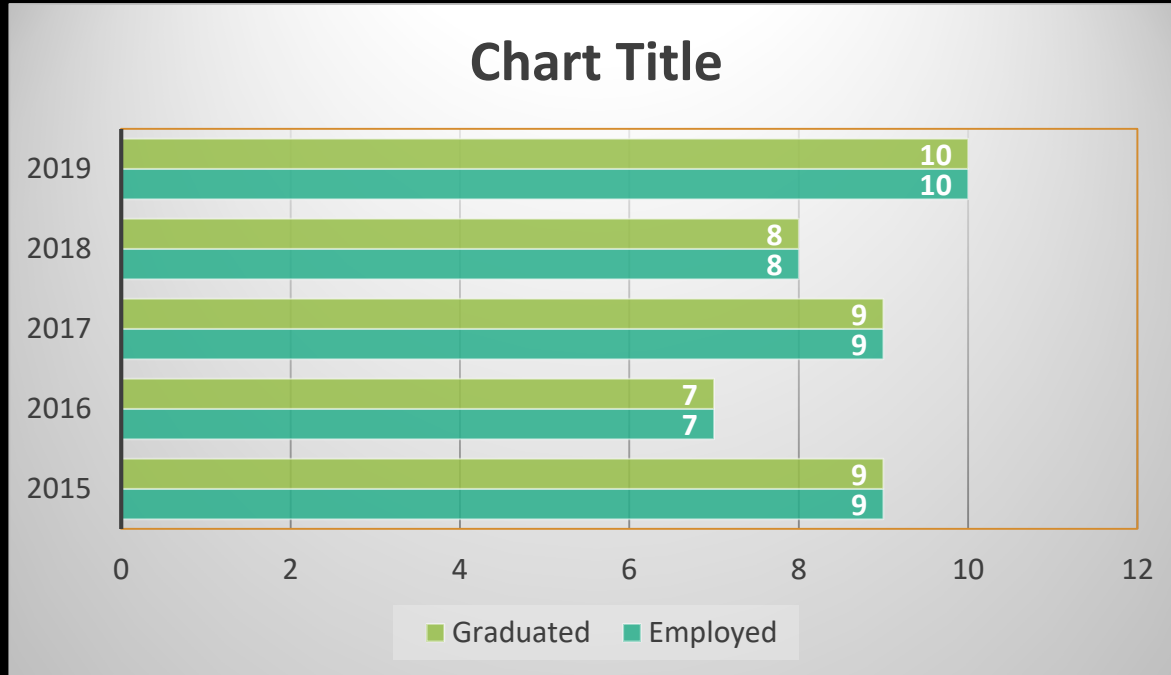


One of the reasons I chose this program was because when I did my observation hours, they all said, "Go to LCCC, it is the best! They prepare you for clinical and for passing the ARDMS exams." Current students in the program.

Duke University: 90-day eval on 2020 graduate. You have exceeded our expectations as a new graduate. Your program is exceptional.

Because of you, I can provide for my family and we are in a much better place now. Thank you! – 2015 Graduate

Employment Rate



Laramie
Cheyenne Regional

Poudre Valley

Loveland

Greeley

Denver Area

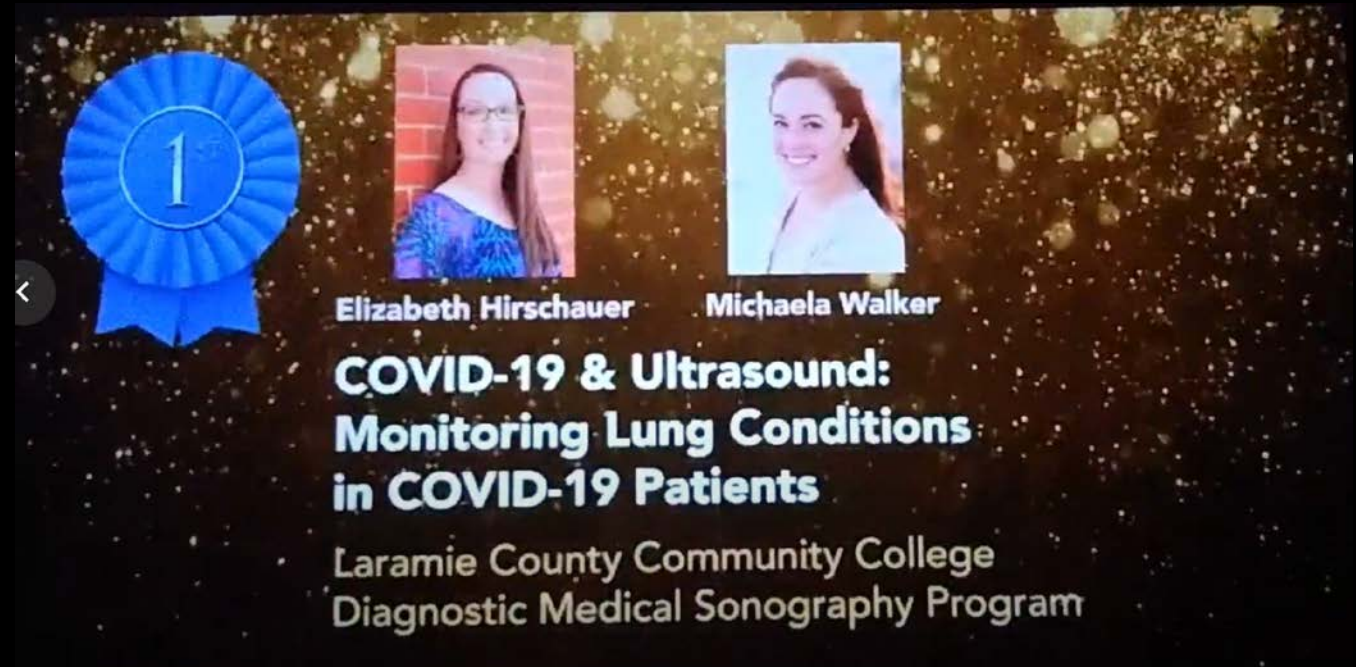
Cheyenne Radiology Group

Highlights Over the Last Five Years

- Received Vascular accreditation from the Commission on Education in Allied Health Education Programs
- Increased enrollment to 12 students
- OB Lab for pregnancy: Sent three patients to their doctor for emergent care – 3 babies saved

First Place in Student Poster Competition

Society of Diagnostic Medical
Sonography Conference 2020



Future Opportunities



- Increase retention rate
- Increase number of consistent clinical sites
 - South Carolina
 - Florida



- Additional adjunct to assist with demands in the lab
- Expand into Breast concentration
- Allow registered Sonographers to take concentration courses

Obstacles/Challenges

Clinical sites require relocation or long-distance commutes

Limited lab size and only 5 ultrasound machines need 6 for equal scan time

Limited resources for adjuncts

High demand of faculty in lab to assist students (one-to-one)

