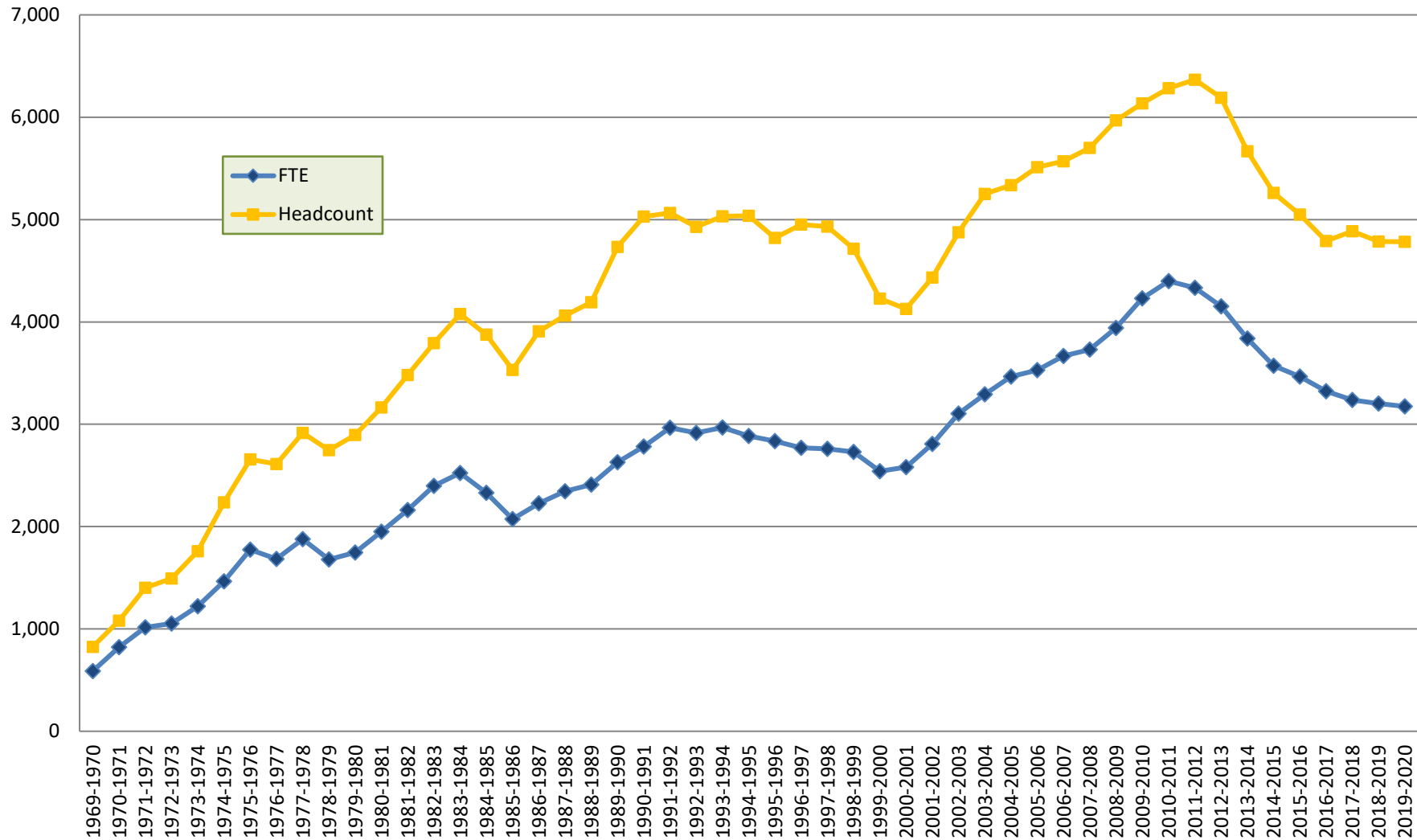




Laramie County Community College Annualized¹ Enrollment History



¹ Annualized: (summer+fall+spring)/2

* For enrollment reporting purposes, the academic year includes the summer, fall, and spring semesters.

Source: Official Enrollment Reports

Prepared by: LCCC IR Office, DRM, 06/26/2020

Laramie County Community College Enrollment History

Year	Full-Time Equivalent (FTE) Enrollment				Headcount Enrollment			
	Summer	Fall	Spring	Annualized	Summer	Fall	Spring	Annualized
1969-1970		599.00	576.00	587.50		808	843	825.5
1970-1971	129.00	843.00	673.00	822.50	104	1,217	838	1,079.5
1971-1972	83.00	995.00	952.00	1,015.00	181	1,202	1,423	1,403.0
1972-1973	183.00	911.00	1,013.00	1,053.50	328	1,193	1,465	1,493.0
1973-1974	286.00	1,034.00	1,125.00	1,222.50	459	1,487	1,573	1,759.5
1974-1975	250.00	1,237.00	1,441.00	1,464.00	606	1,817	2,050	2,236.5
1975-1976	351.00	1,543.00	1,654.00	1,774.00	844	2,134	2,333	2,655.5
1976-1977	281.00	1,596.00	1,490.00	1,683.50	692	2,226	2,304	2,611.0
1977-1978	125.00	1,944.00	1,688.00	1,878.50	876	2,634	2,323	2,916.5
1978-1979	333.00	1,536.00	1,490.00	1,679.50	806	2,329	2,360	2,747.5
1979-1980	272.00	1,625.00	1,596.00	1,746.50	753	2,535	2,503	2,895.5
1980-1981	300.00	1,791.00	1,812.00	1,951.50	803	2,661	2,865	3,164.5
1981-1982	366.00	1,934.00	2,024.00	2,162.00	973	2,850	3,141	3,482.0
1982-1983	412.00	2,142.00	2,242.00	2,398.00	1,074	3,084	3,428	3,793.0
1983-1984	414.00	2,332.00	2,303.00	2,524.50	1,152	3,510	3,493	4,077.5
1984-1985	393.00	2,186.00	2,083.00	2,331.00	1,100	3,352	3,297	3,874.5
1985-1986	326.00	1,936.00	1,884.00	2,073.00	970	3,052	3,039	3,530.5
1986-1987	357.00	2,113.00	1,984.00	2,227.00	1,004	3,618	3,196	3,909.0
1987-1988	345.00	2,213.00	2,134.00	2,346.00	989	3,686	3,448	4,061.5
1988-1989	349.00	2,254.00	2,219.00	2,411.00	1,033	3,715	3,639	4,193.5
1989-1990	439.00	2,426.00	2,395.00	2,630.00	1,257	4,120	4,089	4,733.0
1990-1991	457.00	2,574.00	2,534.00	2,782.50	1,338	4,450	4,269	5,028.5
1991-1992	503.00	2,695.00	2,735.00	2,966.50	1,333	4,352	4,443	5,064.0
1992-1993	506.00	2,672.00	2,654.00	2,916.00	1,427	4,291	4,139	4,928.5
1993-1994	472.00	2,750.00	2,716.00	2,969.00	1,378	4,277	4,407	5,031.0
1994-1995	443.00	2,710.00	2,618.00	2,885.50	1,292	4,499	4,285	5,038.0
1995-1996	436.75	2,699.75	2,534.25	2,835.38	1,314	4,282	4,044	4,820.0
1996-1997	460.08	2,583.33	2,498.29	2,770.85	1,410	4,121	4,373	4,952.0
1997-1998	441.00	2,625.80	2,451.25	2,759.03	1,445	4,392	4,024	4,930.5
1998-1999	413.00	2,608.08	2,437.17	2,729.13	1,311	4,158	3,959	4,714.0
1999-2000	366.08	2,324.37	2,389.17	2,539.81	1,097	3,586	3,773	4,228.0
2000-2001	335.84	2,407.67	2,420.33	2,581.92	1,031	3,574	3,647	4,126.0
2001-2002	392.41	2,576.21	2,647.63	2,808.13	1,060	3,863	3,942	4,432.5
2002-2003	399.00	2,833.08	2,977.63	3,104.86	1,075	4,157	4,521	4,876.5
2003-2004	499.70	2,975.00	3,110.21	3,292.46	1,298	4,465	4,737	5,250.0
2004-2005	527.42	3,169.80	3,234.30	3,465.76	1,380	4,522	4,772	5,337.0
2005-2006	564.70	3,176.40	3,313.92	3,527.51	1,479	4,603	4,943	5,512.5
2006-2007	589.25	3,252.05	3,491.50	3,666.40	1,503	4,584	5,051	5,569.0
2007-2008	606.90	3,411.20	3,441.20	3,729.65	1,568	4,886	4,948	5,701.0
2008-2009	635.00	3,549.26	3,695.84	3,940.05	1,585	5,033	5,322	5,970.0
2009-2010	628.09	3,737.26	4,095.17	4,230.26	1,619	5,040	5,609	6,134.0
2010-2011	710.42	3,928.00	4,158.67	4,398.55	1,774	5,193	5,600	6,283.5
2011-2012	814.00	3,888.30	3,963.09	4,332.70	1,920	5,302	5,512	6,367.0
2012-2013	708.33	3,720.70	3,876.41	4,152.72	1,828	5,141	5,411	6,190.0
2013-2014	606.92	3,552.83	3,515.42	3,837.59	1,541	4,894	4,901	5,668.0
2014-2015	635.33	3,291.67	3,216.42	3,571.71	1,524	4,494	4,504	5,261.0
2015-2016	561.92	3,223.83	3,145.08	3,465.42	1,380	4,288	4,430	5,049.0
2016-2017	458.17	3,138.46	3,049.46	3,323.05	1,111	4,218	4,250	4,789.5
2017-2018	469.00	3,045.04	2,958.04	3,236.04	1,168	4,260	4,343	4,885.5
2018-2019	419.25	3,024.00	2,958.54	3,200.90	1,078	4,235	4,260	4,786.5
2019-2020	370.50	3,053.58	2,924.83	3,174.46	945	4,285	4,335	4,782.5

Source: Official Enrollment Reports

LCCC IR Office, DRM, 6/26/2020